

TP-LINK®

User Guide

TL-WN721N
150Mbps Wireless N USB Adapter

TL-WN722N
150Mbps High Gain Wireless USB Adapter



REV6.0.0

1910011787

COPYRIGHT & TRADEMARKS

Specifications are subject to change without notice. **TP-LINK®** is a registered trademark of TP-LINK TECHNOLOGIES CO., LTD. Other brands and product names are trademarks or registered trademarks of their respective holders.

No part of the specifications may be reproduced in any form or by any means or used to make any derivative such as translation, transformation, or adaptation without permission from TP-LINK TECHNOLOGIES CO., LTD. Copyright © 2016 TP-LINK TECHNOLOGIES CO., LTD. All rights reserved.

<http://www.tp-link.com>

FCC STATEMENT



This equipment has been tested and found to comply with the limits for a Class B digital device, pursuant to part 15 of the FCC Rules. These limits are designed to provide reasonable protection against harmful interference in a residential installation. This equipment generates, uses and can radiate radio frequency energy and, if not installed and used in accordance with the instructions, may cause harmful interference to radio communications. However, there is no guarantee that interference will not occur in a particular installation. If this equipment does cause harmful interference to radio or television reception, which can be determined by turning the equipment off and on, the user is encouraged to try to correct the interference by one or more of the following measures:

- Reorient or relocate the receiving antenna.
- Increase the separation between the equipment and receiver.
- Connect the equipment into an outlet on a circuit different from that to which the receiver is connected.
- Consult the dealer or an experienced radio/ TV technician for help.

This device complies with part 15 of the FCC Rules. Operation is subject to the following two conditions:

1. This device may not cause harmful interference.
2. This device must accept any interference received, including interference that may cause undesired operation.

Any changes or modifications not expressly approved by the party responsible for compliance could void the user's authority to operate the equipment.

Note: The manufacturer is not responsible for any radio or TV interference caused by unauthorized modifications to this equipment. Such modifications could void the user's authority to operate the equipment.

FCC RF Radiation Exposure Statement

This equipment complies with FCC RF radiation exposure limits set forth for an uncontrolled environment. This device and its antenna must not be co-located or operating in conjunction with any other antenna or transmitter.

"To comply with FCC RF exposure compliance requirements, this grant is applicable to only Mobile Configurations. The antennas used for this transmitter must be installed to provide a separation distance of at least 5 mm from all persons and must not be co-located or operating in conjunction with any other antenna or transmitter."

CE Mark Warning

CE 1588

This is a class B product. In a domestic environment, this product may cause radio interference, in which case the user may be required to take adequate measures.

RF Exposure Information

This device meets the EU requirements (1999/5/EC Article 3.1a) on the limitation of exposure of the general public to electromagnetic fields by way of health protection.

This device has been tested and meets the ICNIRP exposure guidelines and the European Standard EN 62209-2. SAR is measured with this device at a separation of 0.5 cm to the body, while transmitting at the highest certified output power level in all frequency bands of this device. Carry this device at least 0.5 cm away from your body to ensure exposure levels remain at or below the as-tested levels.

Canadian Compliance Statement

This device complies with Industry Canada license-exempt RSS standard(s). Operation is subject to the following two conditions:

- (1) This device may not cause interference, and
- (2) This device must accept any interference, including interference that may cause undesired operation of the device.

Le présent appareil est conforme aux CNR d'Industrie Canada applicables aux appareils radio exempts de licence. L'exploitation est autorisée aux deux conditions suivantes:

- 1) l'appareil ne doit pas produire de brouillage;
- 2) l'utilisateur de l'appareil doit accepter tout brouillage radioélectrique subi, même si le brouillage est susceptible d'en compromettre le fonctionnement.

Radiation Exposure Statement:

This equipment complies with IC radiation exposure limits set forth for an uncontrolled environment. This equipment should be installed and operated with minimum distance 20cm between the radiator & your body.

Déclaration d'exposition aux radiations:

Cet équipement est conforme aux limites d'exposition aux rayonnements IC établies pour un environnement non contrôlé. Cet équipement doit être installé et utilisé avec un minimum de 20 cm de distance entre la source de rayonnement et votre corps.

Industry Canada Statement

CAN ICES-3 (B)/NMB-3(B)

Korea Warning Statements

당해 무선설비는 운용중 전파혼신 가능성이 있음.

NCC Notice

注意！

依據 低功率電波輻射性電機管理辦法

第十二條 經型式認證合格之低功率射頻電機，非經許可，公司、商號或使用者均不得擅自變更頻率、加大功率或變更原設計之特性或功能。

第十四條 低功率射頻電機之使用不得影響飛航安全及干擾合法通行；經發現有干擾現象時，應立即停用，並改善至無干擾時方得繼續使用。前項合法通信，指依電信規定作業之無線電信。低功率射頻電機需忍受合法通信或工業、科學以及醫療用電波輻射性電機設備之干擾。

BSMI Notice

安全諮詢及注意事項

- 請使用原裝電源供應器或只能按照本產品注明的電源類型使用本產品。
- 清潔本產品之前請先拔掉電源線。請勿使用液體、噴霧清潔劑或濕布進行清潔。
- 注意防潮，請勿將水或其他液體潑灑到本產品上。
- 插槽與開口供通風使用，以確保本產品的操作可靠並防止過熱，請勿堵塞或覆蓋開口。
- 請勿將本產品置放於靠近熱源的地方。除非有正常的通風，否則不可放在密閉位置中。
- 請不要私自打開機殼，不要嘗試自行維修本產品，請由授權的專業人士進行此項工作。





Продукт сертифіковано згідно с правилами системи УкрСЕПРО на відповідність вимогам нормативних документів та вимогам, що передбачені чинними законодавчими актами України.



Safety Information

- When product has power button, the power button is one of the way to shut off the product; when there is no power button, the only way to completely shut off power is to disconnect the product or the power adapter from the power source.
- Don't disassemble the product, or make repairs yourself. You run the risk of electric shock and voiding the limited warranty. If you need service, please contact us.
- Avoid water and wet locations.

Explanation of the symbols on the product label





Symbol	Explanation
	DC voltage
	<p>RECYCLING</p> <p>This product bears the selective sorting symbol for Waste electrical and electronic equipment (WEEE). This means that this product must be handled pursuant to European directive 2012/19/EU in order to be recycled or dismantled to minimize its impact on the environment.</p> <p>User has the choice to give his product to a competent recycling organization or to the retailer when he buys a new electrical or electronic equipment.</p>

CONTENTS

Conventions	1
Chapter 1 Introduction.....	2
1.1 Overview of Product.....	2
1.2 Features.....	2
1.3 LED Status.....	3
Chapter 2 Installation.....	4
2.1 Hardware Installation	4
Chapter 3 Windows.....	5
3.1 Install Driver	5
3.2 Join a Wireless Network.....	7
3.2.1 Windows Wireless Utility	7
3.2.2 TP-LINK Utility.....	9
3.2.3 WPS (Wi-Fi Protected Setup).....	10
3.3 Management	14
3.3.1 Status	14
3.3.2 Profile	14
3.3.3 Advanced	16
3.3.4 SoftAP	17
3.3.5 About.....	18
3.4 Uninstall Driver and Utility	18
Chapter 4 Mac OS X	20
4.1 Install Driver and Utility	20
4.2 Join a Wireless Network.....	24
4.2.1 TP-LINK Utility.....	24
4.2.2 WPS (Wi-Fi Protected Setup).....	26
4.3 Management	30
4.4 Uninstall Driver and Utility	31
Chapter 5 Linux	33
Appendix A: Specifications.....	34
Appendix B: Glossary.....	35

Conventions

The 'adapter' mentioned in this User Guide stands for TL-WN721N/TL-WN721NC/TL-WN722N/TL-WN722NC without any explanation. TL-WN721N, TL-WN721NC, TL-WN722N and TL-WN722NC are sharing this User Guide, and for simplicity, we will take TL-WN722N as an example. The table below shows their similarities and differences.

TL-WN722N	TL-WN722NC	TL-WN721N	TL-WN721NC
			
Example used in this User Guide.	Compared to the example, it has a cradle instead of a cable.	Compared to the example, it lacks an antenna.	Compared to the example, it lacks an antenna while has a cradle.

Chapter 1 Introduction

1.1 Overview of Product

The adapter is an 802.11n client device designed to deliver a high-speed and unrivaled wireless performance for your desktop. With a faster wireless connection, you can get a better Internet experience, such as downloading, gaming, video streaming.

With the 802.11n technology, higher throughput improvements using MIMO (multiple input, multiple output antennas), the TL-WN721N/TL-WN722N's auto-sensing capability allows high packet transfer rate up to 150Mbps for maximum throughput. It has good capability on anti-jamming, and it can also interoperate with other wireless (802.11b/g) products. The adapter supports WEP, WPA and WPA2 encryption to prevent outside intrusion and protect your personal information from being exposed.

The adapter is easy to install and manage with the Quick Setup Wizard guiding you step-by-step through the installation process and the TP-LINK Wireless Configuration Utility instructing you to quickly set up a wireless connection.

With unmatched wireless performance and security protection, TL-WN721N/TL-WN722N is the best choice for easily adding or upgrading wireless connectivity to your desktop.

1.2 Features

- Complies with IEEE802.11n, IEEE802.11g, IEEE802.11b standards
- Supports WPA/WPA2 data security, IEEE802.1x authentication, TKIP/AES encryption, WEP encryption
- Supports maximum throughput rate up to 150Mbps for TL-WN721N/TL-WN722N and it can automatically adjust to lower speeds due to distance or other operating limitations
- Provides USB 2.0 interface
- Supports Ad-Hoc and Infrastructure modes
- Good capability on anti-jamming
- Supports roaming between access points when configured in Infrastructure mode
- Ease to configure and provides monitoring information
- Supports Windows XP/7/8/8.1/10 32/64bit, Mac OS X 10.6 - 10.11 and Linux

1.3 LED Status

Status	Working Status
Off	The driver has not been installed; The adapter's radio has been disabled.
Flashing Slowly	The driver has been installed but no data is being transmitted or received.
Flashing Quickly	Data is being transmitted or received.

 **Note:**

When the adapter failed to connect to a wireless network, the LED may be off. Please choose your network and try to connect again.

Chapter 2 Installation

2.1 Hardware Installation

There are two ways to install the Adapter:

- Plug the Adapter directly to the USB port on your computer.
- Connect the Adapter and your computer through the USB cable/cradle attached in package.

 **Note:**

The Found New Hardware Wizard screen will pop up when the adapter is installed correctly. Click **Cancel**.

After connecting your adapter to the computer, please follow the instructions in the appropriate chapter for your operating system: [Windows](#), [Mac OS X](#), [Linux](#).

Chapter 3 Windows

3.1 Install Driver

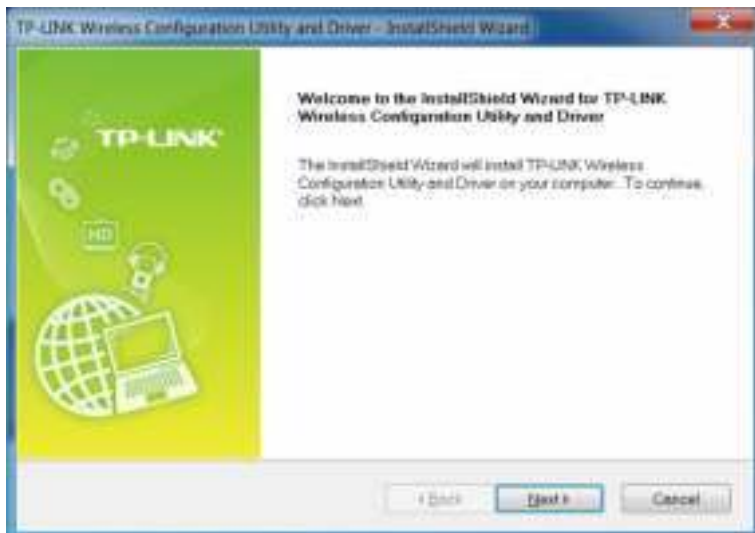
The Setup Wizard will guide you through the installation procedures. We use the procedures in Windows 7 as an example - the procedures may vary slightly for other versions of Windows.

1. Insert the resource CD into your CD drive and run the **Autorun.exe** from the pop-up AutoPlay window. Select **TL-WN722N** and click **Install Driver** to begin.



 **Note:**

- The CD is included in the package. If your CD does not work or your computer doesn't support the CD, you can also download the driver and utility from the TP-LINK website (<http://www.tp-link.com>).
 - In some operating systems, the CD screen will pop up automatically. Otherwise, run the CD manually.
2. The InstallShield Wizard window displays. Click **Next** to continue.



3. Choose a setup type. It is recommended to select **Install Driver Only**. Click **Next**.



 **Note:**

The default setup type is **Install Driver Only**. You can also select **Install TP-LINK Wireless Configuration Utility and Driver** for more functions, such as joining a wireless network via TP-LINK Utility or WPS, and managing the adapter.

4. Click **Install**. After a few minutes, the installation completes. Click **Finish**.





3.2 Join a Wireless Network

You can join a wireless network via Windows built-in Wireless Utility. If you want to use Option 2: TP-LINK Utility or Option 3: WPS (Wi-Fi Protected Setup) to join a wireless network, you need to install TP-LINK Utility first.

Option 1: [Windows Wireless Utility](#)

You can use the Windows WLAN Autoconfig service (for Windows 7/8/8.1/10) and the Wireless Zero Configuration service (for Windows XP) to join a Wi-Fi network.

Option 2: [TP-LINK Utility](#)

TP-LINK Utility lets you easily connect the adapter to a Wi-Fi network and manage the adapter.



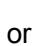

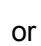
Option 3: [WPS \(Wi-Fi Protected Setup\)](#)

WPS (Wi-Fi Protected Setup) is a network security standard for easily adding computers and other devices to a home network. Use this method if your wireless router or access point supports WPS.

3.2.1 Windows Wireless Utility

Follow the instructions in the appropriate section below to use your computer system's built-in wireless utility: [Windows 7/8/8.1/10](#), [Windows XP](#).

➤ Windows 7/8/8.1/10

1. Click ,  or  (Network icon) on the taskbar. Select the network you want to join, and click **Connect**. Enter your Wi-Fi password when prompted.
2. When the network icon changes to  or , it indicates a successful network connection.


 **Note:**

If you do not want to enter the Wi-Fi password, you can also join a wireless network either by pushing the WPS or QSS button on your router or AP, or entering the PIN of your router when the screen prompts you to do so, and click **Next**.

➤ Windows XP

1. If you have not installed TP-LINK Utility, please directly go to Step 2.

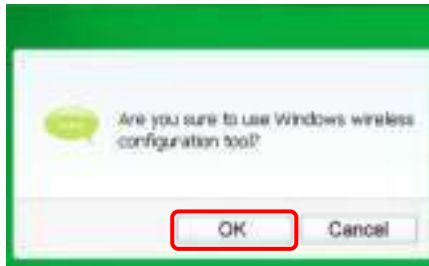
If you have installed TP-LINK Utility, you need to switch to use Windows wireless configuration tool manually using one of the following methods.


- Right-click  (TP-LINK Utility icon) on the system tray. (If you do not see the icon, click the hidden icons arrow on the system tray.) Select **Switch to Windows wireless configuration tool**.

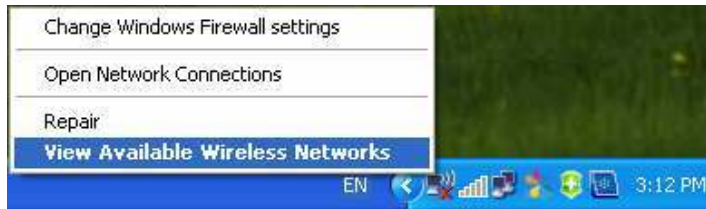


- Open TP-LINK Utility and select **Advanced** tab. Select **Use Windows wireless configuration tool** the following figure shows. Click **OK** when it prompts.





2. Right-click  (Windows XP Wireless Zero Configuration Utility icon) on the taskbar, and select **View Available Wireless Networks**.



3. Select the network you want to join, and click **Connect**. Enter your Wi-Fi password when prompted.

3.2.2 TP-LINK Utility

1. Double-click  (TP-LINK Utility icon). The **Network** screen displays.



2. Select the network you want to join from the list on this screen and click **Connect**. If you want the adapter to automatically connect to the network next time, select the **Connect automatically** checkbox. Enter your Wi-Fi password when prompted.



 **Note:**

If your Wi-Fi network is not displayed in the list, you can try to join it by [WPS](#) or by adding a profile in the [Profile](#) screen.

3.2.3 WPS (Wi-Fi Protected Setup)

WPS can be activated via PBC (Push Button Configuration) and PIN code. Please refer to [PBC](#) or [PIN](#) below.

➤ PBC

Option 1

1. Press the **WPS/QSS** button on your router or AP. Within 2 minutes, press and hold the **WPS** button on the adapter until the following screen appears.



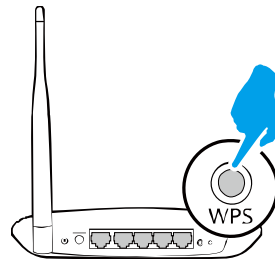


2. The following screen indicates a successful connection by WPS. Click **OK**.



Option 2

1. Press the **WPS/QSS** button on your router or AP.



2. Open TP-LINK Utility and click **WPS** tab. Select **Push the button on my access point or wireless router** and click **Connect**.



3. The following screen indicates a successful connection by WPS. Click **OK**.



➤ **PIN**

Option 1

1. Open TP-LINK Utility and click **WPS** tab. Select **Enter the PIN of my access point or wireless router**. Enter the PIN of your router or AP. Click **Connect**.



 **Note:**

The default PIN of your router or AP is printed on the product label of your router or AP. If you generated a new PIN for your router, please enter the new one.

2. The following screen indicates a successful connection by WPS. Click **OK**.



Option 2

1. Open TP-LINK Utility and click **WPS** tab. Select **Enter the PIN of this device into my access point or wireless router**. The screen displays a PIN of the adapter, which is generated randomly. Click **Connect**.



2. Log into the Web Management page of your router or AP. Go to the **WPS** page, enter the PIN of the adapter in the corresponding field and click **Connect**.
3. The following screen indicates a successful connection by WPS. Click **OK**.



3.3 Management

TP-LINK Utility provides you with an easy way to manage your adapter. It includes the following sections:


Status - View the information of the current Wi-Fi network connection and of the adapter.

Profile - Save or manage various Wi-Fi network connection settings.

Advanced - Turn on or off the SoftAP mode and power saving mode, switch between TP-LINK Utility and Windows Wireless Utility (for Windows XP only).

SoftAP - Configure the settings of the network shared by your adapter, and view the IP address of your adapter when it works on SoftAP mode.

About - View your adapter's Utility version and its Driver version.

Double-click  (TP-LINK Utility icon) and click the **Status**, **Profile** or **Advanced** tab to manage the corresponding section of your adapter.

3.3.1 Status

You can view the IP address and MAC address of the adapter, the signal strength of the Wi-Fi network, and other information of the network status as shown in the following figure.



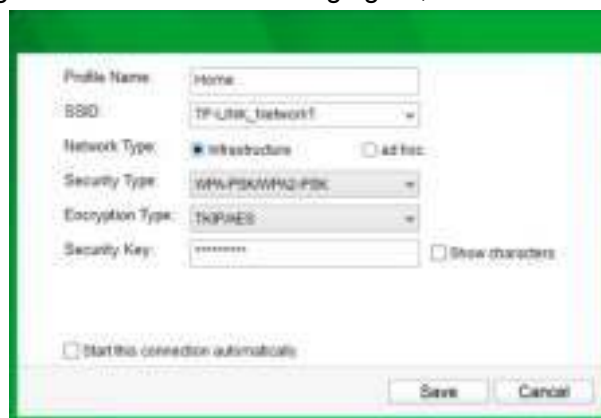
3.3.2 Profile

The **Profile** screen lets you save and manage different Wi-Fi network connection settings as profiles so that you can quickly and simply connect to your network. Moreover, you can join a hidden Wi-Fi network that does not broadcast its SSID by adding a profile, provided that you know its wireless settings, such as SSID, security type, and encryption type. For more details, please refer to the instructions below: [To add a new profile](#), [To join a Wi-Fi network](#), [To manage an existing profile](#).



➤ **To add a new profile**

1. Click the **Add** button, and then a new window will open.
2. Complete the settings as shown in the following figure, and click **Save**.



Profile Name - Enter a name for your profile, such as Home, Office, Coffeehouse. Do not enter the profile name that already exists.

SSID - Select your Wi-Fi network from the drop-down list or enter your Wi-Fi network name manually.

Network Type - Select **Infrastructure** if you want to connect to a wireless router or an access point. Select **ad hoc** if you want to connect to another wireless client, such as an adapter.

- **Infrastructure**

If you select **Infrastructure**, you are asked to select or enter the corresponding wireless settings, which should be the same as those of your Wi-Fi network.

- **ad hoc**

If you select **ad hoc**, you are asked to configure the wireless settings for your network, including choosing the operating frequency band, the security type, the encryption type and setting a security key.



 **Note:**

As for **Key Index**, you can select ASCII or Hexadecimal format from the drop-down list.

ASCII_64 - Please enter 5 ASCII characters.

ASCII_128 - Please enter 13 ASCII characters.

Hexadecimal_64 - Please enter 10 Hexadecimal digits (any combination of 0-9, a-f, A-F, excluded space).

Hexadecimal_128 - Please enter 26 Hexadecimal digits (any combination of 0-9, a-f, A-F, excluded space).

➤ **To join a Wi-Fi network**

If you want to join a Wi-Fi network that listed in the profile screen, select the profile and click **Connect** in the bottom corner.

➤ **To manage an existing profile**

If you want to change the name or the wireless settings of an existing profile, select it and click the **Modify** button in the Profile screen, then you can edit the settings of this profile. If you want to delete a profile that you no longer use, select it and click **Remove**.

3.3.3 Advanced



Select wireless configuration tool - In Windows XP. You can either use TP-LINK Utility or Windows wireless configuration tool. While in other operating systems, since you can use both TP-LINK Utility and Windows wireless configuration tool at the same time, this function is disabled.


Wireless network adapter switch - If you've installed several adapters in your computer, you can switch to another adapter among the drop-down list.

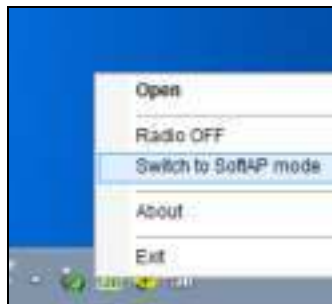
SoftAP mode - Once **ON** is selected, the adapter will work as an AP.

Power Save mode - Once **ON** is selected, the adapter will automatically reduce its power consumption when not being used.

3.3.4 SoftAP

SoftAP is short for Software enabled Access Point. When the adapter works in SoftAP mode, it allows the computer to create a wireless hotspot that other wireless devices nearby can use.

To switch to SoftAP mode, right-click the utility icon  on the taskbar and select **Switch to SoftAP mode**.



After switching to SoftAP mode, the SoftAP icon appears in the utility. Click the **SoftAP** tab, and complete the settings, then click **Apply** for the settings to take effect.




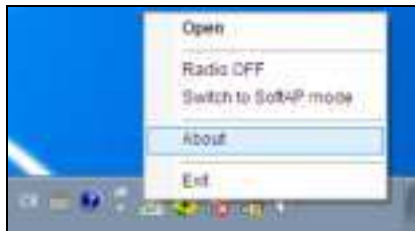
- **Soft AP mode:** Select **ON** or **OFF** to enable or disable this function.
- **Internet Connecting Share (ICS):** Select a network connection that can access to the Internet from the drop-down list. For example, if your computer is connecting to the Internet

via an Ethernet cable, you should select the corresponding **Local Area Connection** so as to share the network with other wireless devices.

- **SSID:** Set a name for the wireless network shared by your adapter. The default is SoftAP.
- **Security Type:** The security type here is set to be WPA2-PSK which is based on 802.11i and uses AES (Advanced Encryption Standard).
- **Encryption Type:** The encryption type here is set to be AES.
- **Security Key:** Set a security key for the wireless network that shared by your adapter. It is recommended that you specify another key instead of the default key 12345678. When another wireless device connects to the network shared by your adapter, it will be asked to enter the corresponding security key.
- **IP Address:** Displays the IP address of the adapter when it works in SoftAP mode. You can also check if the network shared by your adapter is working properly by checking this IP Address. For example, if the IP Address is 0.0.0.0, it means that the Internet connection is failed.

3.3.5 About

You can view the adapter's information in the **About** screen, such as the UI version (Utility version) and the Driver version. Right-click  (TP-LINK Utility icon) on the taskbar and select **About**, then the About screen displays.



3.4 Uninstall Driver and Utility

The software uninstallation steps vary a bit in different systems, please follow the appropriate instructions for your Windows operating system: [Windows 8/8.1/10](#), [Windows XP/7](#).

- **Windows 8/8.1/10**

Uninstall driver:

Go to **Start > Apps** or **All Apps**, and find the **TP-LINK** application. Click **Uninstall - TP-LINK TL-WN722N Driver**, then follow the on-screen instructions to complete the uninstallation.

Uninstall utility:

Go to **Start > Apps** or **All Apps**, and find the **TP-LINK** application. Click **Uninstall - TP-LINK Wireless Configuration Utility**, then follow the on-screen instructions to complete the uninstallation.

- **Windows XP/7**

Uninstall driver:

Go to **Start > All Programs > TP-LINK > Uninstall - TP-LINK TL-WN722N Driver**. Follow the on-screen instructions to complete the uninstallation.

Uninstall utility:

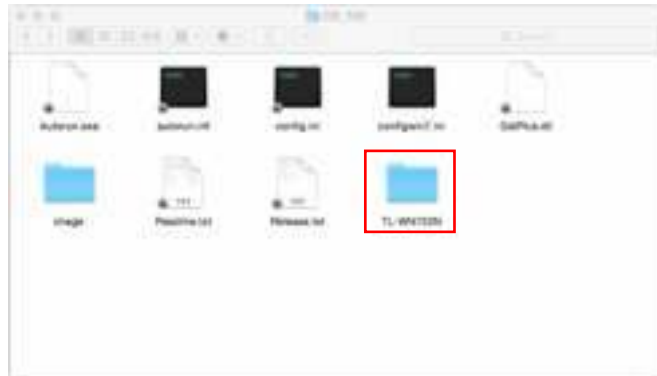
Go to **Start > All Programs > TP-LINK > Uninstall - TP-LINK Wireless Configuration Utility**. Follow the on-screen instructions to complete the uninstallation.

Chapter 4 Mac OS X

4.1 Install Driver and Utility

We take the procedures in Mac OS X 10.10 as an example - the procedures may vary slightly for other versions of Mac OS.

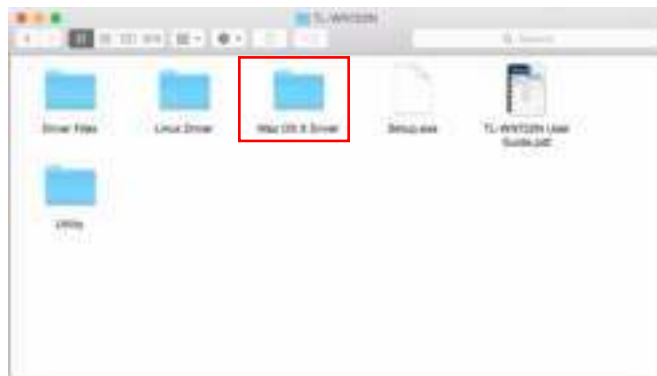
1. Insert the CD and run it manually. Open the **TL-WN722N** folder.



 **Note:**

The CD is included in the package. If your CD does not work or your computer doesn't support the CD, you can also download the driver and utility from the TP-LINK website (<http://www.tp-link.com>).

2. Open the **Mac OS X Driver** folder.



3. Double-click the **Mac OS X Version.zip** file. It will be unzipped into the **Download** folder automatically.

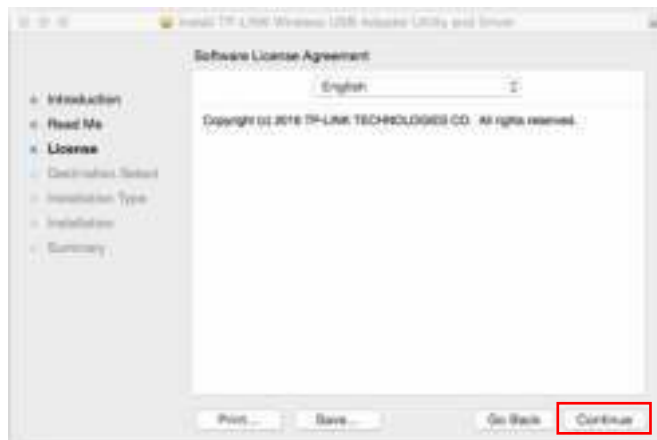


4. Open the **Mac OS X Version** folder, double click the **Installer.pkg** file to open the installation wizard.



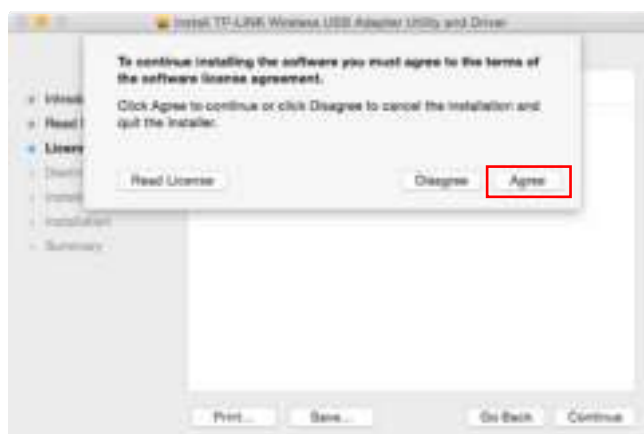
5. The **Install TP-LINK Wireless USB Adapter Utility and Driver Wizard** window will appear. Click **Continue** and follow the wizard to continue the installation.

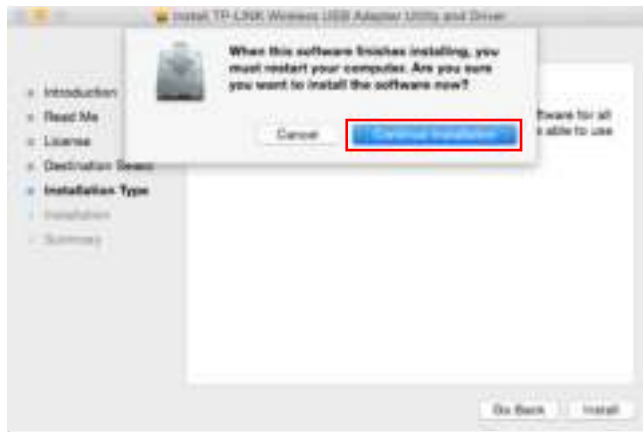





 **Note:**

The language of this utility is in accordance with the language of your computer by default, and any change of it is invalid.








6. After restarting the computer, the TP-LINK Utility icon  will appear on the menu bar in the upper-right corner of the screen. To use the utility to join a Wi-Fi network with your adapter, refer to [Join a Wireless Network](#).

 **Note:**

If the TP-LINK Utility icon  does not appear on the menu bar, make sure the USB wireless network adapter is connected properly and its LED is on.

4.2 Join a Wireless Network

There are two options of using the adapter to join a Wi-Fi network.

Option 1: [TP-LINK Utility](#)


TP-LINK Utility lets you easily connect the adapter to a Wi-Fi network and manage the adapter.

Option 2: [WPS \(Wi-Fi Protected Setup\)](#)

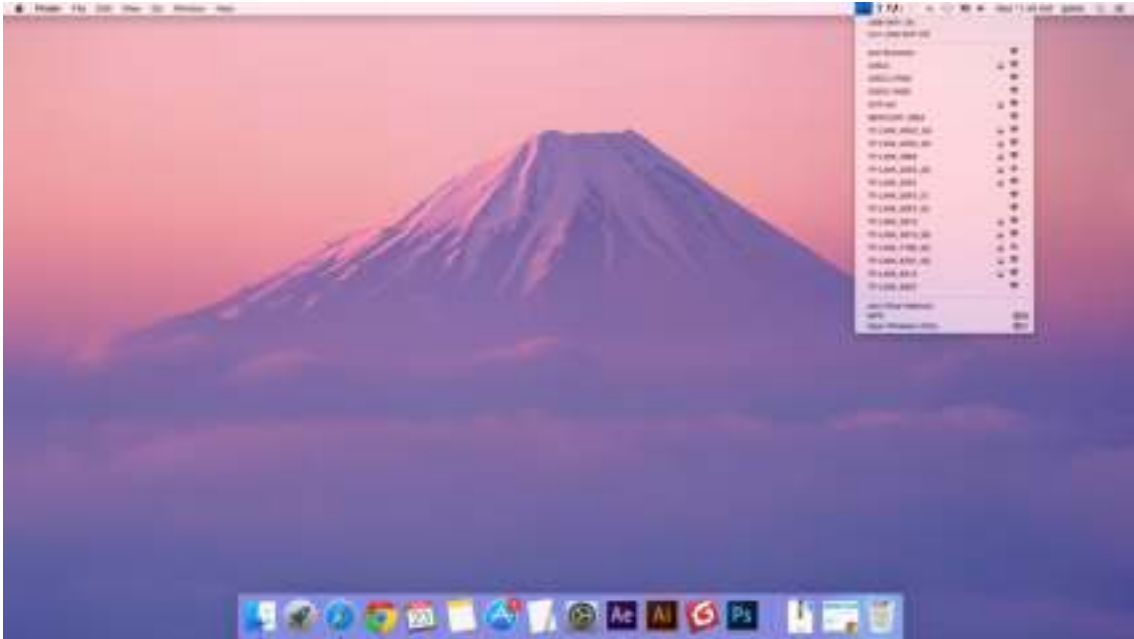
WPS (Wi-Fi Protected Setup) is a network security standard for easily adding computers and other devices to a home network. Use this method if your wireless router or access point supports WPS.

4.2.1 TP-LINK Utility


Option 1

Click the TP-LINK Utility icon  on the menu bar, and choose a Wi-Fi network from it. Enter the network password when prompted.

When you are connected to the Internet, the network icon will change to .



Option 2

1. Click the TP-LINK Utility icon  on the menu bar, and then click **Open Wireless Utility** at the bottom of the network list.
2. Select the network you want to join from the list and enter the network password when prompted. Click **Join**.



 **Note:**

If your Wi-Fi network is not displayed in the list, you can try to join it by [WPS](#) or by clicking **Join Other** on the above screen, and then follow the on-screen instructions to join the network.

4.2.2 WPS (Wi-Fi Protected Setup)

WPS can be activated via PBC (Push Button Configuration) and PIN. Please refer to [PBC](#) or [PIN](#) below.

➤ PBC

Option 1

1. Press the **WPS/QSS** button on your router or AP. Within 2 minutes, press and hold the **WPS** button on the adapter until the following screen appears.

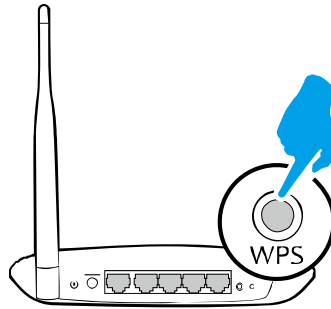



- The following screen indicates a successful connection by WPS. Click **OK**.

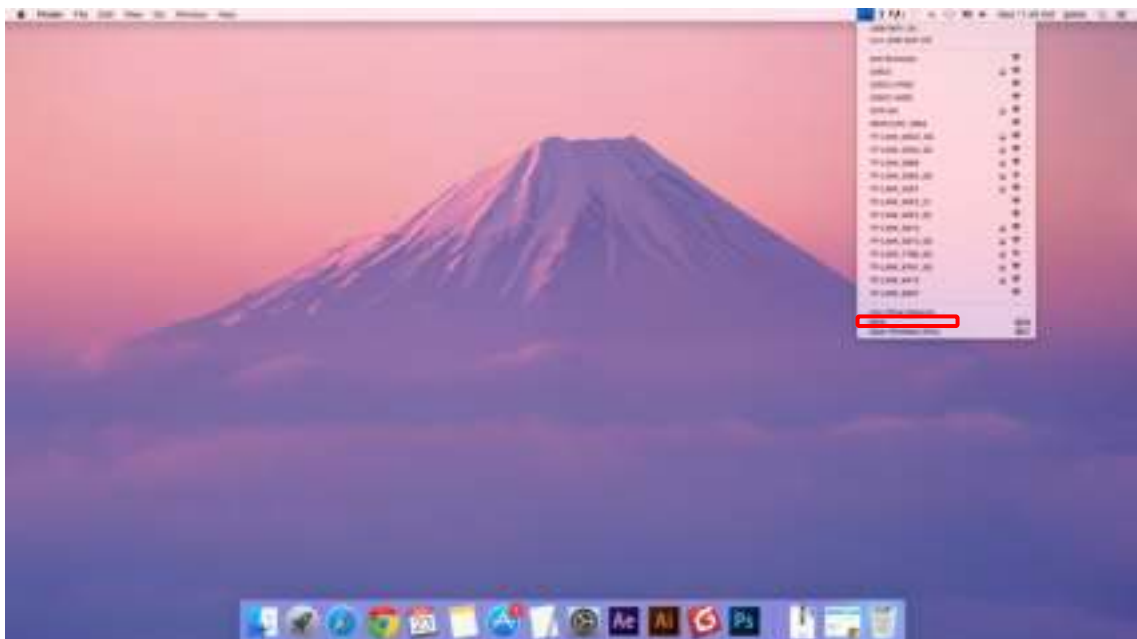


Option 2

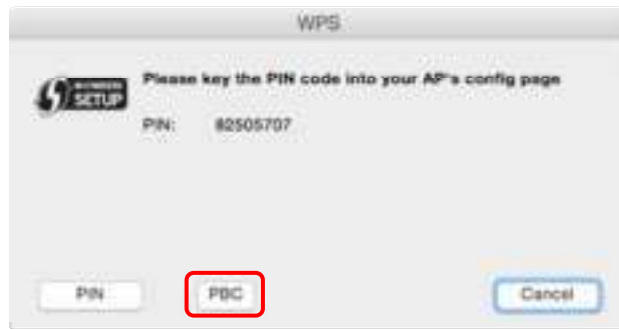
- Press the **WPS/QSS** button on your router or AP.



- Within 2 minutes, click the TP-LINK Utility icon  on the menu bar, and then click **WPS** at the bottom of the network list.




3. Click **PBC**.

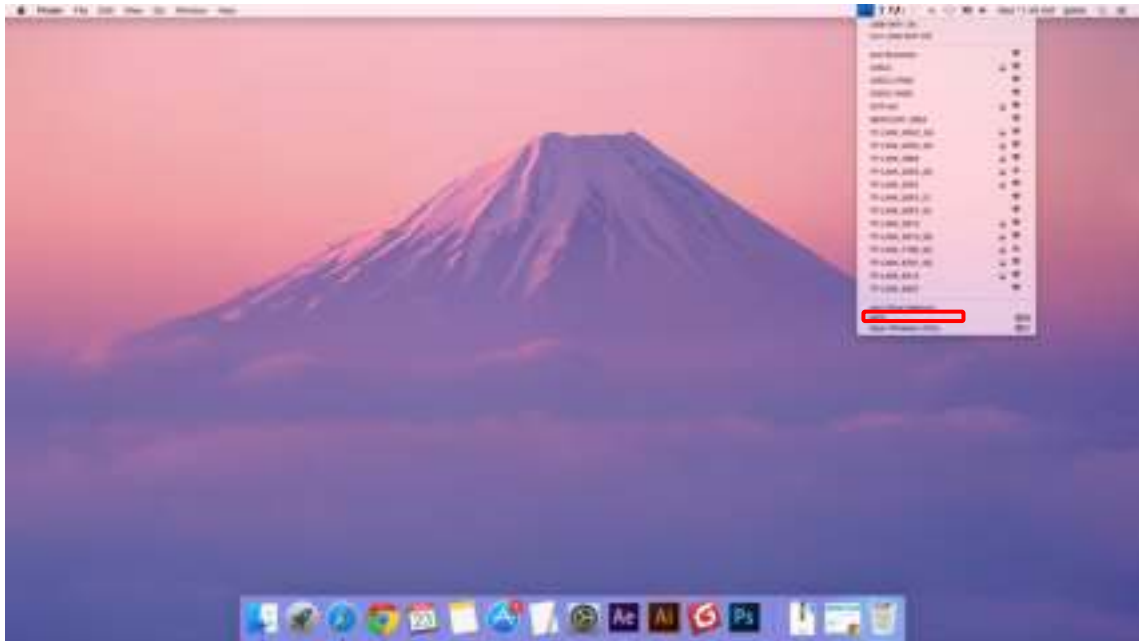


4. The following screen indicates a successful connection by WPS. Click **OK**.

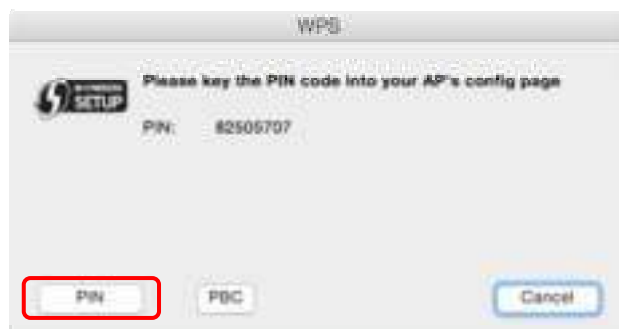


➤ **PIN**

1. Click the TP-LINK Utility icon  on the menu bar, and then click **WPS** at the bottom of the network list.



2. Click **PIN**.




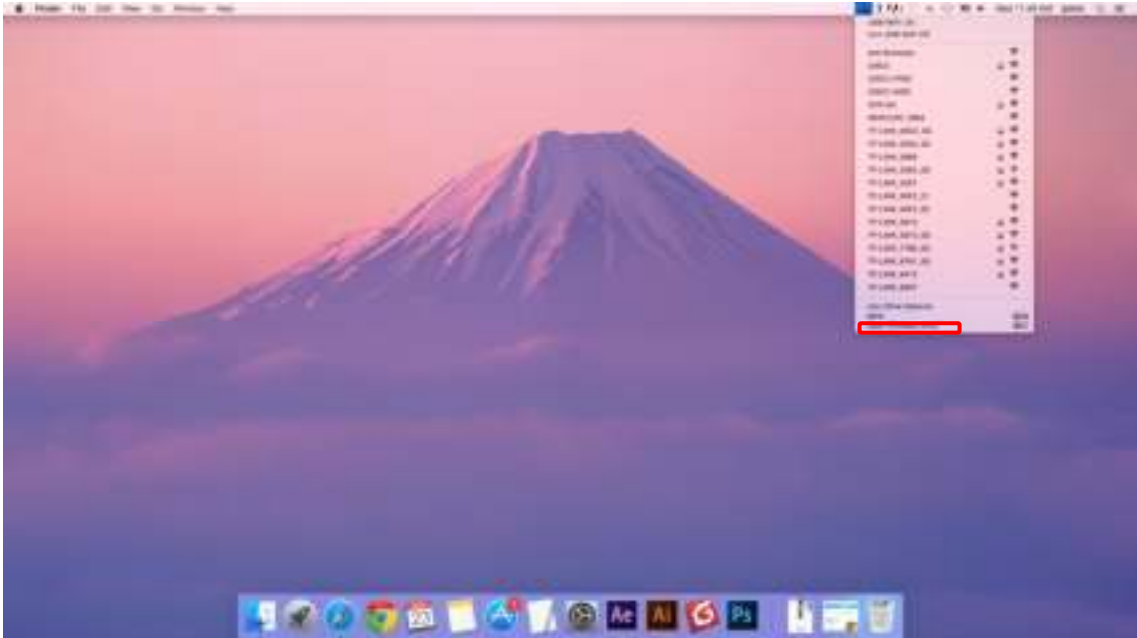
3. Within 2 minutes, log in to the Web Management page of your router or AP. Go to its **WPS** page, enter the PIN of the adapter in the corresponding field and click **Connect**.
4. The following screen indicates a successful connection by WPS. Click **OK**.



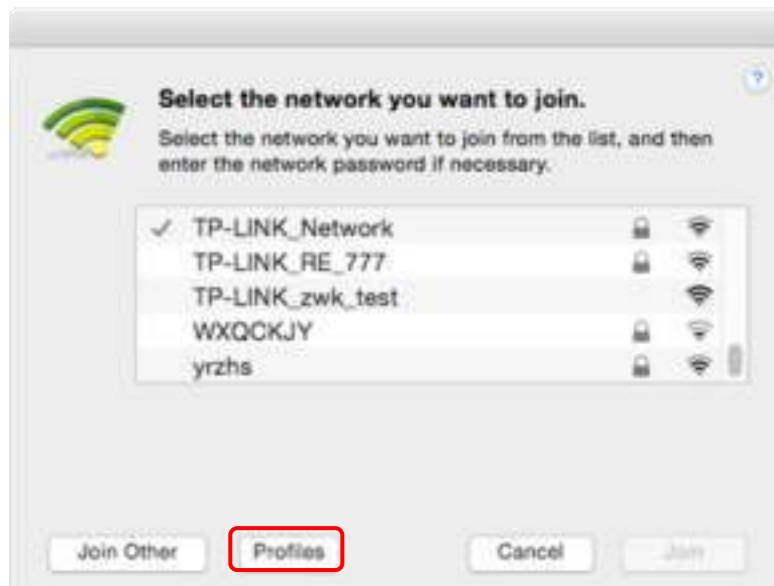
4.3 Management

TP-LINK Utility provides you with an easy way to manage various connection settings of your Wi-Fi network.

1. Click the TP-LINK Utility icon  on the menu bar, and then click **Open Wireless Utility** at the bottom of the network list.



2. TP-LINK Utility will pop up. Click the **Profiles** button to open the Profiles screen.



3. The **Profiles** screen lets you manage different Wi-Fi connection settings as profiles so that you can connect to your network easily.



Preferred Networks displays the networks that you once connected to. The networks' status and information are displayed on the table.

➤ **To join a Wi-Fi network**

If you want to join a Wi-Fi network that is listed on the profile screen, select the profile and click the **Apply** button in the bottom right corner.

➤ **To manage an existing profile**

If you want to change the wireless settings of an existing profile, select it, and then you can edit its **Security** and **Password**. If you want to delete a profile, select it and click the **Remove**.

4.4 Uninstall Driver and Utility

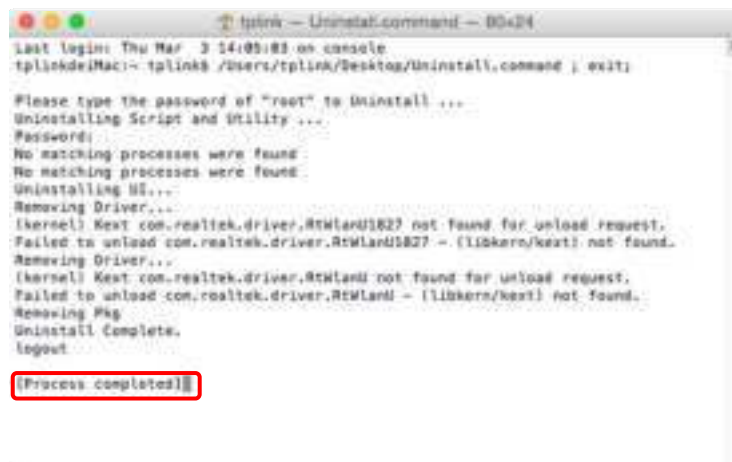
1. Insert the CD and run it manually.
2. Go to **Archer T4U > Mac OS X Driver > Mac OS X Version.zip > Uninstall.command**.
3. As shown in the figure below, a command window will pop up. Please type the password of the root user to uninstall the software.



```
tp-link - Uninstal.command - aude - 00x04
Last login: Thu Mar 3 14:05:03 on console
tp-link@Mac:~$ tp-link /Users/tp-link/Desktop/Uninstall.command ; exit

Please type the password of "root" to Uninstall ...
Uninstalling Script and Utility ...
Password: [REDACTED]
```

4. Wait till the **"Process completed"** shows up, then restart your computer to finish the uninstallation.



```
tp-link - Uninstal.command - 00x04
Last login: Thu Mar 3 14:05:03 on console
tp-link@Mac:~$ tp-link /Users/tp-link/Desktop/Uninstall.command ; exit

Please type the password of "root" to Uninstall ...
Uninstalling Script and Utility ...
Password:
No matching processes were found.
No matching processes were found.
Uninstalling UI...
Removing Driver...
(kernel) Kept com.realtek.driver.RtWlanU1827 not found for unload request.
Failed to unload com.realtek.driver.RtWlanU1827 - (libkern/keatl) not found.
Removing Driver...
(kernel) Kept com.realtek.driver.RtWlanU not found for unload request.
Failed to unload com.realtek.driver.RtWlanU - (libkern/keatl) not found.
Removing Pkg
Uninstall Complete.
logout

[Process completed]
```

 **Note:**

The CD is included in the package. If your CD does not work or your computer doesn't support the CD, you can also download the driver and utility from the TP-LINK website (<http://www.tp-link.com>).

Chapter 5 Linux

Visit the TP-LINK website at <http://www.tp-link.com>, and go to TL-WN722N's product page. Find the compatible version of driver in the support page, then download and install the driver on your computer.

Appendix A: Specifications

Normal	
Interface	USB 2.0 Interface
Standards	IEEE 802.11n, IEEE 802.11g, IEEE 802.11b
Button	Wi-fi Protected Setup (WPS) Button (QSS Compatible)
Operating System	Windows XP, Windows Vista, Windows 7, Windows 8, Windows 8.1, Windows 10 Mac OS X 10.6–10.11 Linux
Wireless Signal Rate With Automatic Fallback	11b: Up to 11Mbps(dynamic) 11g: Up to 54Mbps(dynamic) 11n: Up to 150Mbps(dynamic) - TL-WN721N/TL-WN722N
Modulation	11b: CCK,QPSK,BPSK 11g: OFDM 11n: QPSK, BPSK, 16-QAM, 64-QAM
Media Access Protocol	CSMA/CA with ACK
Data Security	WEP; WPA/WPA2; WPA-PSK/WPA2-PSK
Frequency*	2.4 ~ 2.4835GHz
Spread Spectrum	Direct Sequence Spread Spectrum (DSSS)
Safety & Emissions	FCC, CE, RoHS

Environmental and Physical	
Working Temperature	0°C~40°C (32°F~104°F)
Storage Temperature	-40°C~70°C(-40°F~158°F)
Working Humidity	10% ~ 90% RH, Non-condensing
Storage Humidity	5% ~ 90% RH, Non-condensing

* Only 2.412GHz~2.462GHz is allowed to be used in USA, which means only channel 1~11 is available for American users to choose.

Appendix B: Glossary

- **802.11b** - The 802.11b standard specifies a wireless product networking at 11 Mbps using direct-sequence spread-spectrum (DSSS) technology and operating in the unlicensed radio spectrum at 2.4GHz, and WEP encryption for security. 802.11b networks are also referred to as Wi-Fi networks.
- **802.11g** - specification for wireless networking at 54 Mbps using direct-sequence spread-spectrum (DSSS) technology, using OFDM modulation and operating in the unlicensed radio spectrum at 2.4GHz, and backward compatibility with IEEE 802.11b devices, and WEP encryption for security.
- **802.11n** - 802.11n builds upon previous 802.11 standards by adding MIMO (multiple-input multiple-output). MIMO uses multiple transmitter and receiver antennas to allow for increased data throughput via spatial multiplexing and increased range by exploiting the spatial diversity, perhaps through coding schemes like Alamouti coding. The Enhanced Wireless Consortium (EWC) was formed to help accelerate the IEEE 802.11n development process and promote a technology specification for interoperability of next-generation wireless local area networking (WLAN) products.
- **Ad hoc Network** - An ad hoc network is a group of computers, each with a Wireless Adapter, connected as an independent 802.11 wireless LAN. Ad hoc wireless computers operate on a peer-to-peer basis, communicating directly with each other without the use of an access point. Ad hoc mode is also referred to as an Independent Basic Service Set (IBSS) or as peer-to-peer mode, and is useful at a departmental scale or SOHO operation.
- **DSSS - (Direct-Sequence Spread Spectrum)** - DSSS generates a redundant bit pattern for all data transmitted. This bit pattern is called a chip (or chipping code). Even if one or more bits in the chip are damaged during transmission, statistical techniques embedded in the receiver can recover the original data without the need of retransmission. To an unintended receiver, DSSS appears as low power wideband noise and is rejected (ignored) by most narrowband receivers. However, to an intended receiver (i.e. another wireless LAN endpoint), the DSSS signal is recognized as the only valid signal, and interference is inherently rejected (ignored).
- **FHSS - (Frequency Hopping Spread Spectrum)** - FHSS continuously changes (hops) the carrier frequency of a conventional carrier several times per second according to a pseudo-random set of channels. Because a fixed frequency is not used, and only the transmitter and receiver know the hop patterns, interception of FHSS is extremely difficult.
- **Infrastructure Network** - An infrastructure network is a group of computers or other devices, each with a Wireless Adapter, connected as an 802.11 wireless LAN. In infrastructure mode, the wireless devices communicate with each other and to a wired network by first going through an access point. An infrastructure wireless network connected to a wired network is referred to as a Basic Service Set (BSS). A set of two or more BSS in a single network is referred to as an Extended Service Set (ESS). Infrastructure mode is useful at a corporation scale, or when it is necessary to connect the wired and wireless networks.

- **Spread Spectrum** - Spread Spectrum technology is a wideband radio frequency technique developed by the military for use in reliable, secure, mission-critical communications systems. It is designed to trade off bandwidth efficiency for reliability, integrity, and security. In other words, more bandwidth is consumed than in the case of narrowband transmission, but the trade off produces a signal that is, in effect, louder and thus easier to detect, provided that the receiver knows the parameters of the spread-spectrum signal being broadcast. If a receiver is not tuned to the right frequency, a spread-spectrum signal looks like background noise. There are two main alternatives, Direct Sequence Spread Spectrum (DSSS) and Frequency Hopping Spread Spectrum (FHSS).
- **SSID** - A **S**ervice **S**et **I**dentification is a thirty-two character (maximum) alphanumeric key identifying a wireless local area network. For the wireless devices in a network to communicate with each other, all devices must be configured with the same SSID. This is typically the configuration parameter for a wireless PC card. It corresponds to the ESSID in the wireless Access Point and to the wireless network name. See *also* Wireless Network Name and ESSID.
- **WEP** - (**W**ired **E**quivalent **P**rivacy) - A data privacy mechanism based on a 64-bit or 128-bit or 152-bit shared key algorithm, as described in the IEEE 802.11 standard. To gain access to a WEP network, you must know the key. The key is a string of characters that you create. When using WEP, you must determine the level of encryption. The type of encryption determines the key length. 128-bit encryption requires a longer key than 64-bit encryption. Keys are defined by entering in a string in HEX (hexadecimal - using characters 0-9, A-F) or ASCII (American Standard Code for Information Interchange – alphanumeric characters) format. ASCII format is provided so you can enter a string that is easier to remember. The ASCII string is converted to HEX for use over the network. Four keys can be defined so that you can change keys easily.
- **Wi-Fi** - A trade name for the 802.11b wireless networking standard, given by the Wireless Ethernet Compatibility Alliance (WECA, see <http://www.wi-fi.net>), an industry standards group promoting interoperability among 802.11b devices.
- **WLAN** - (**W**ireless **L**ocal **A**rea **N**etwork) - A group of computers and associated devices communicate with each other wirelessly, which network serving users are limited in a local area.
- **WPA** - (**W**i-Fi **P**rotected **A**ccess) - A wireless security protocol uses TKIP (Temporal Key Integrity Protocol) encryption, which can be used in conjunction with a RADIUS server.